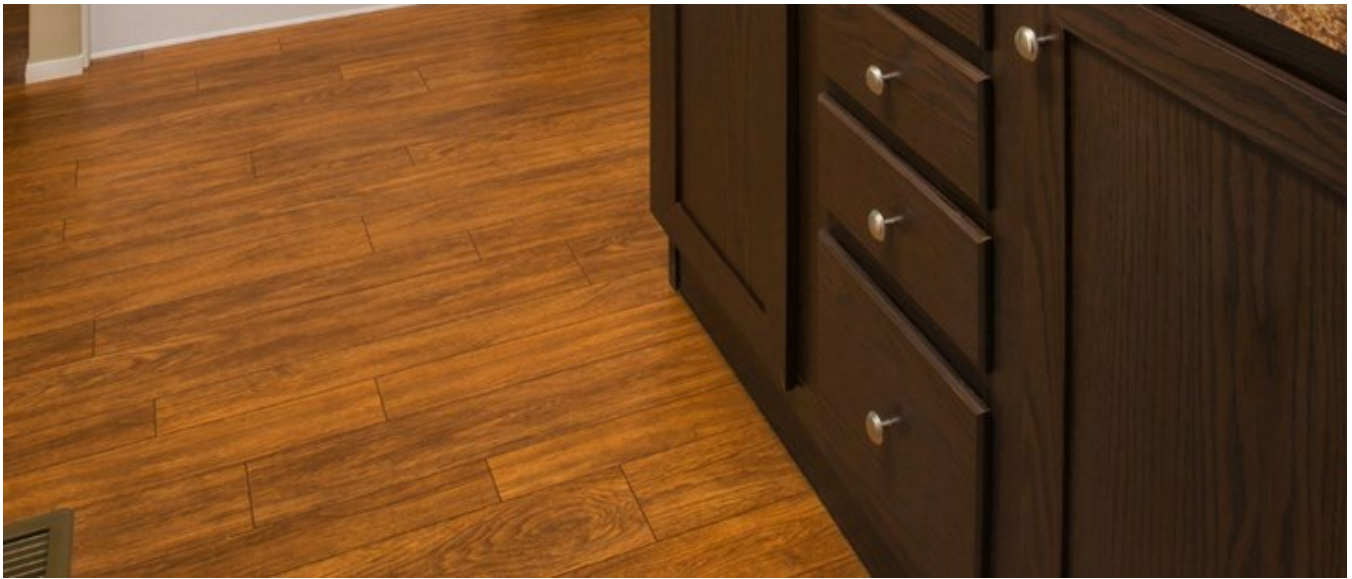




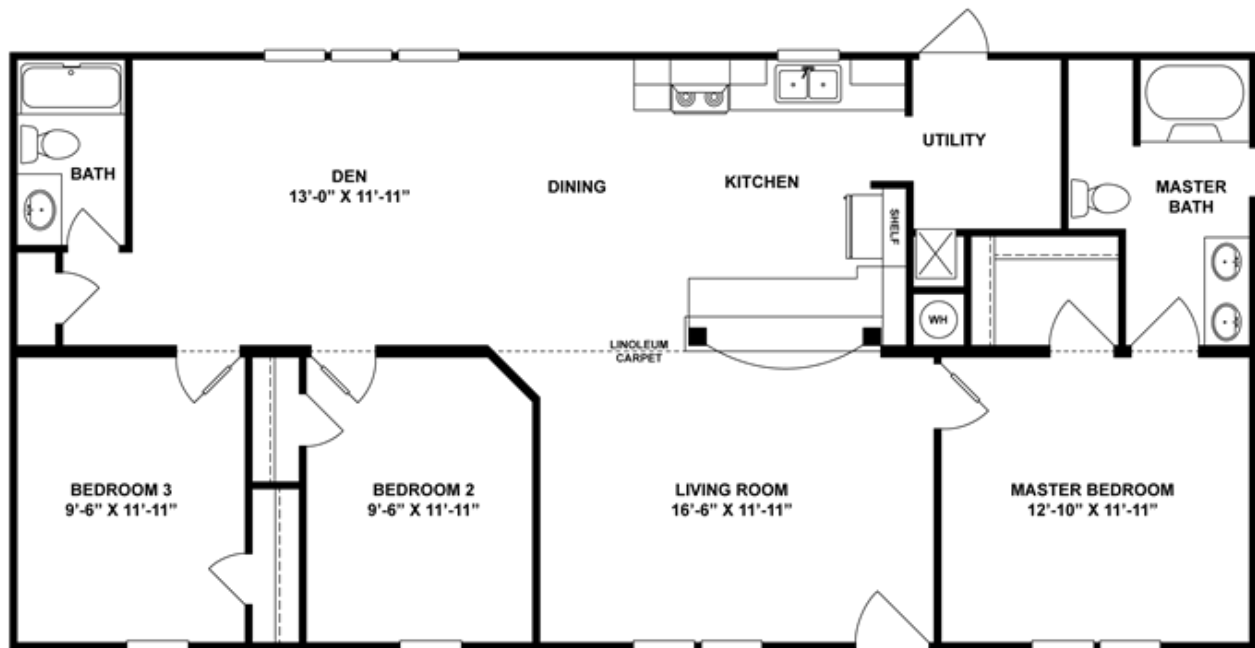
# TPS ARCH MODULAR





**TPS ARCH MODULAR** Floor plan number: RIC249007NCABM

**3 beds • 2 baths • 1456 sq.ft. • 28' width • 52' depth**



Our home building facilities invest in continuous product and process improvements. Plans, dimensions, features, materials, specifications and availability are subject to change without notice or obligation. Renderings and floor plans are representative likenesses of our homes and may differ from the actual homes. We invite you to tour a Home Center near you and inspect the highest value in quality housing available or call (704) 484-2211 to speak with a Home Consultant. Copyright 2017, CMH. All rights reserved.

## OAKWOOD HOMES-SHELBY

1839 EAST DIXON BLVD.  
SHELBY, NC 28151

Monday - Thursday: 9am - 7pm  
Friday: 9am - 6pm  
Saturday: 9am - 5pm  
Sunday: Closed

(704) 484-2211