

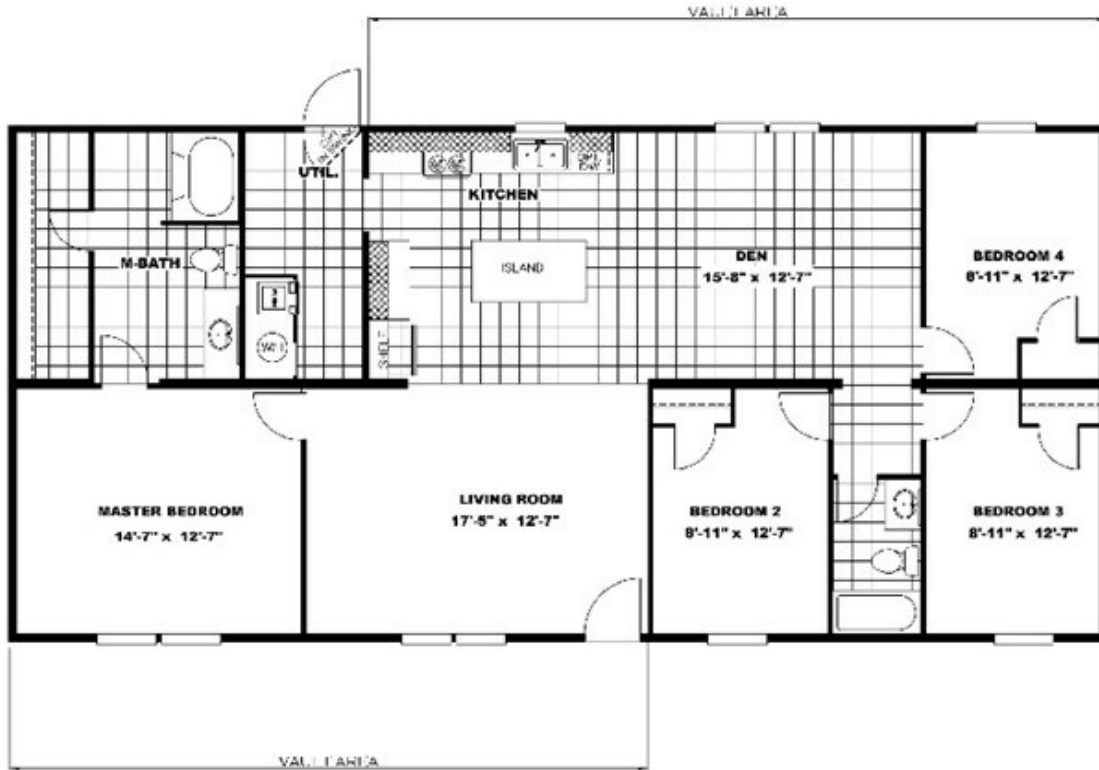


SET UP IN MARVEL



MARVEL Floor plan number: CLH040701TNAB

4 beds • 2 baths • 1568 sq.ft. • 28' width • 56' depth



Our home building facilities invest in continuous product and process improvements. Plans, dimensions, features, materials, specifications and availability are subject to change without notice or obligation. Renderings and floor plans are representative likenesses of our homes and may differ from the actual homes. We invite you to tour a Home Center near you and inspect the highest value in quality housing available or call (704) 484-2211 to speak with a Home Consultant. Copyright 2017, CMH. All rights reserved.

OAKWOOD HOMES-SHELBY

1839 EAST DIXON BLVD.
SHELBY, NC 28151

Monday - Thursday: 9am - 6pm
Friday: 9am - 5pm
Saturday: 9am - 5pm
Sunday: Closed

(704) 484-2211